

**Solar Carport - Single Rows (Middle pole)**

➤ **DESIGN CRITERIA**

Wind Load: 30~55m/s

Snow Load: 0.5~1.5KN/m<sup>2</sup>

Solar Panel:

Layout : 1X8 cars

➤ **BASIC PARAMETER**

Material: Aluminum 6063-t5/ Steel(Q235)

Anodized surface thickness over 10um.

Fastener: Stainless steel SS304

Water Proof: Steel tile

Tilt Angle: 0~20 degree

Lowest height H: 2.5 m

Width of space: L1 2.5m

Length of space: L2 5m

➤ **STYLE**

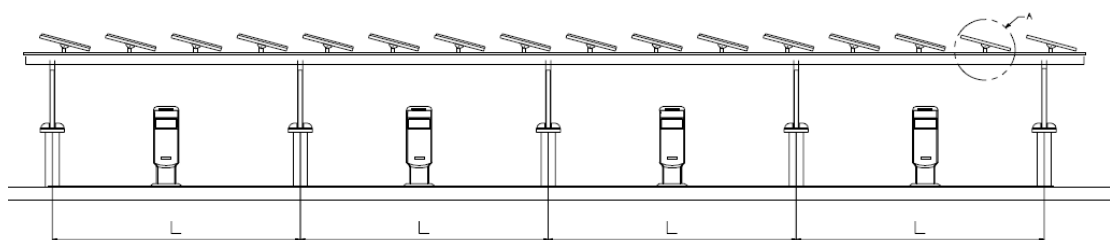
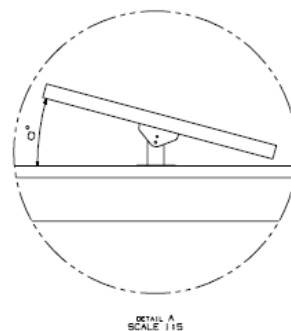
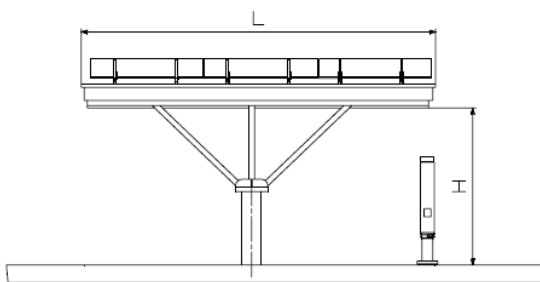
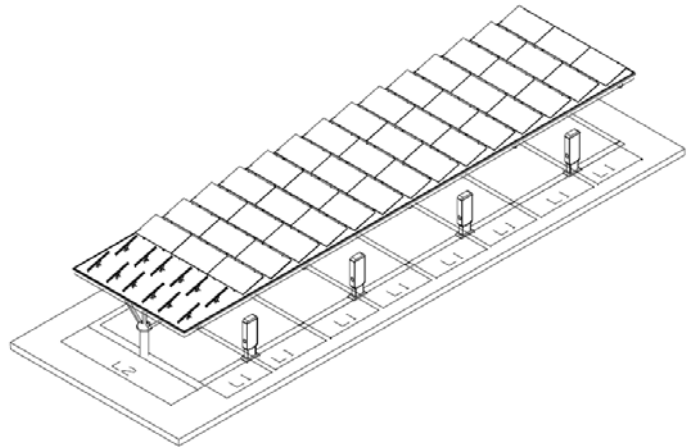
Double Row Carport

East-West Vertical parking

Suitable for Car, Van and SUV

➤ **CHARACTERISTIC**

1. Keep away from wind and rain
2. Vehicle charge station
3. Power supply to LED light, advertising Board etc.
4. Sell clean energy to grid,



Room 1005, No. 939 JinQiao Road, Pudong, Shanghai China 200136

Tel: 0086 21 61600231/61600232/61600233

[www.frontierack.com](http://www.frontierack.com)